

Primary types of Chinese longhorned woodboring beetles (Coleoptera: Cerambycidae and Disteniidae) of the Smithsonian Institution

STEVEN W. LINGAFELTER¹, ANDRÉS GARZÓN-MORENO² &
EUGENIO H. NEARNS³

¹*Research Entomologist and Curator*

Systematic Entomology Laboratory, Agriculture Research Service, USDA, Smithsonian Institution, National Museum of Natural History

Washington, D.C. 20013-7012, U.S.A.

²*Department of Entomology*

Smithsonian Institution, National Museum of Natural History

Washington, D.C. 20013-7012, U.S.A.

³*USDA Postdoctoral Researcher*

Department of Entomology

Smithsonian Institution, National Museum of Natural History

Washington, D.C. 20013-7012, U.S.A.

Abstract

The primary types of Chinese (mainland China, Taiwan, and Tibet) longhorned woodboring beetles (Coleoptera: Cerambycidae, Disteniidae) of the Smithsonian Institution are catalogued and figured, current through 2012. Data on the original combination, current name, current tribal classification, and type locality are verified and presented. There are 94 primary types from China including 18 in Cerambycinae, 2 in Disteniidae, 60 in Lamiinae, 9 in Lepturinae, 2 in Necydalinae, and 3 in Prioniinae. These were described by Stephan Breuning, Lawrence and Elizabeth Dillon, J. Linsley Gressitt, Leo Heyrovský, Kazuo Ohbayashi, and Friedrich Tippmann. Three specimens that were labeled as holotypes and long included in the Smithsonian Institution primary type collection were found to be paratypes and these are listed at the end of the paper, along with remarks about the actual type depositories.

Key words: Cerambycidae, Disteniidae, holotypes, catalog, China, longhorned woodboring beetles

Introduction

The Smithsonian Institution contains one of the most important collections of Cerambycidae

and related families in the world. By the end of 2011, the Smithsonian Institution contained over 2,000 primary types of Cerambycidae and Disteniidae (there are no primary types of the other cerambycoid families Vesperidae and Oxypeltidae present), making it the third largest collection in the world based on primary types (the Muséum national d'Histoire naturelle, Paris, France, has a dominating lead and contains over 10,000 primary types [Tavakilian & Chevillotte, 2012] followed by The Natural History Museum, London, England, with over 6,700 primary types [Max Barclay, pers. comm.]).

The Smithsonian Institution contains 94 primary types of Cerambycidae and Disteniidae from China (including territories in mainland China, Taiwan, and Tibet). An example of a drawer of primary type specimens can be seen in Fig. 98. Although 30 different authors have described Cerambycidae and had their primary types deposited in the Smithsonian collections, only 6 described Chinese Cerambycidae. These include J. Linsley Gressitt, Leo Heyrovský, Kazuo Ohbayashi, Lawrence and Elizabeth Dillon, Stephan Breuning, and Friedrich Tippmann. Of these authors, J. Linsley Gressitt was by far the most prolific in terms of the primary types that were deposited at the Smithsonian Institution, having described 78 of the 94 primary types. The data for these types, along with photos of the dorsal habitus and labels, are included. Three specimens that were labeled as holotypes and long included in the Smithsonian Institution primary type collection were found to not be primary types and these are listed at the end of the paper, along with remarks about the actual type depositories. We were unable to locate the primary type of *Linda macilenta* Gressitt, 1947 even though it had a USNM type number associated with it in the original publication.

Methods

We have made the determination that the best way to present the taxa is to sort them first into subfamilies and then alphabetically by specific epithet, subspecific epithet, author, and year. In this way, each species can be located rapidly, without regard to different future combinations and without needing an index.

The text for each primary type is arranged as follows: The first line contains the original specific epithet, original subspecific epithet (if applicable), author, year: page number. This is followed by the figure number of the dorsal habitus and label images. This is followed by the type of type (either holotype or lectotype). The next line is the complete species or subspecies name in the original combination. The third line is the current name, if different from the original combination. The fourth line is the current classification listing the family, subfamily, and tribe based on references including Monné & Bezark (2012), Bousquet, *et al.* (2009), Löbl & Smetana (2010, 2011), Tavakilian & Chevillotte (2012), and Danilevsky (2010, 2011, 2012a-c). The fifth line is the type locality to the most specific level possible based on the label data, literature, and other data. Country and Province are listed in most cases, even if these data are not present on the label or in the original literature. In

some instances, there is a “Remarks” section where additional information such as inconsistencies with the label(s), or other applicable historical information is presented.

An elaboration on the type locality section is warranted here. According to the ICZN (1999, Article 76.1 [see Recommendation 76A]), the type locality is the actual location in which the primary type was collected. Most of the time the label provides the most accurate and specific information and we provide photos of all the labels. There are many instances, however, where the published type locality differs in specificity with the label data. There are also instances where the specimens are unlabeled or erroneously labeled. In those situations, an examination of the primary literature and/or correspondence was used to clarify these data. Most of the time, the locality data is somewhat vague or ambiguous, such that an exact location cannot be determined. Taking information from the labels and primary literature, we provide the most accurate possible type locality for each primary type.

The habitus and label images referred to above are presented in plates in the same order as the text. Larger images, and in some cases additional views, can be found in the online searchable database at www.elaphidion.com (Lingafelter, *et al.* 2012). The primary types in this work are complete through 2012.

PRIMARY TYPES OF CERAMBYCIDAE AND DISTENIIDAE IN THE SMITHSONIAN INSTITUTION

Prioninae

fisheri formosae Gressitt, 1938a: 147 (Fig. 1 a, b) Holotype

Original Combination: *Macrotoma fisheri formosae* Gressitt

Current Name: *Bandar pascoei formosae* (Gressitt, 1938a)

Current Classification: Cerambycidae: Prioninae: Macrotomini

Type Locality: Taiwan: Hori

hainana Gressitt, 1940: 18 (Fig. 2 a, b) Holotype

Original Combination: *Macrotoma hainana* Gressitt

Current Name: *Anomophysis hainana* (Gressitt, 1940)

Current Classification: Cerambycidae: Prioninae: Macrotomini

Type Locality: China: Hainan Province, Hainan Island, Iwa Bi

szechuanus Heyrovský, 1933: 134 (Fig. 3 a, b) Syntype

Original Combination: *Flabelloprionus szechuanus* Heyrovský

Current Name: *Casiphia (Flabelloprionus) szechuana* (Heyrovský, 1933)

Current Classification: Cerambycidae: Prioninae: Anacolini

Type Locality: China: Sichuan Province, Tatsienlu Dsaschi

Lepturinae

***alticola* Gressitt, 1948: 43** (Fig. 4 a, b) Holotype

Original Combination: *Leptura alticola* Gressitt

Current Name: same

Current Classification: Cerambycidae: Lepturinae: Lepturini

Type Locality: China: Sichuan Province (probably), near Tibet border, Wahu Pass, 14,000–16,000 ft.

***discale* Gressitt, 1935a: 569** (Fig. 97 a, b) Holotype

Original Combination: *Anoplodermorpha discale* Gressitt

Current Name: *Pseudalosterna discalis* (Gressitt, 1935a)

Current Classification: Cerambycidae: Lepturinae: Lepturini

Type Locality: China: Hainan Province, Hainan Island, Iwa Bi

Remarks: Label incorrectly states *Anoplodera* as the genus.

***fisheriana* Gressitt, 1938b: 45** (Fig. 5 a, b) Holotype

Original Combination: *Leptura fisheriana* Gressitt

Current Name: *Leptura rufoannulata* (Pic, 1933)

Current Classification: Cerambycidae: Lepturinae: Lepturini

Type Locality: China: Sichuan Province, southwest of Tatsienlu, 9,000–13,000 ft.

***grahamiana* Gressitt, 1938b: 46** (Fig. 6 a, b) Holotype

Original Combination: *Leptura grahamiana* Gressitt

Current Name: same

Current Classification: Cerambycidae: Lepturinae: Lepturini

Type Locality: China: Sichuan Province, Washan, 11,000 ft.

***mupinensis* Gressitt, 1935a: 570** (Fig. 7 a, b) Holotype

Original Combination: *Anoploderamorpha mupinensis* Gressitt

Current Name: *Pseudalosterna mupinensis* (Gressitt, 1935a)

Current Classification: Cerambycidae: Lepturinae: Lepturini

Type Locality: China: Sichuan Province, near Muping, 2,000–8,000 ft.

***occipitalis* Gressitt, 1935e: 255** (Fig. 8 a, b) Holotype

Original Combination: *Pseudopidonia occipitalis* Gressitt

Current Name: *Pidonia occipitalis* (Gressitt, 1935e)



Fig. 1, *Macrotoma fisheri formosae* Gressitt (a, dorsal habitus; b, labels); Fig. 2, *Macrotoma hainana* Gressitt (a, dorsal habitus; b, labels); Fig. 3, *Flabelloprionus szechuanus* Heyrovský (a, dorsal habitus; b, labels); Fig. 4, *Leptura alticola* Gressitt (a, dorsal habitus; b, labels); Fig. 5, *Leptura fisheriana* Gressitt (a, dorsal; b, labels); Fig. 6, *Leptura grahamiana* Gressitt (a, dorsal habitus; b, labels); Fig. 7, *Anoplocleromorpha mupinensis* Gressitt (a, dorsal habitus; b, labels); Fig. 8, *Pseudopidonia occipitalis* Gressitt (a, dorsal habitus; b, labels); Fig. 9, *Leptura semilunata* Gressitt (a, dorsal habitus; b, labels); Fig. 10, *Leptura tatsienluea* Gressitt (a, dorsal habitus; b, labels); Fig. 11, *Eustrangalis viridipennis* Gressitt (a, dorsal habitus; b, labels); Fig. 12, *Necydalis hirayamai* Ohbayashi (a, dorsal habitus; b, labels).

Current Classification: Cerambycidae: Lepturinae: Lepturini

Type Locality: Taiwan: Taiheizan

***semilunata* Gressitt, 1948a: 44** (Fig. 9 a, b) Holotype

Original Combination: *Leptura semilunata* Gressitt

Current Name: *Leptura arcifera* (Blanchard, 1871)

Current Classification: Cerambycidae: Lepturinae: Lepturini

Type Locality: China: Sichuan Province, southwest of Tatsienlu, 9,000–13,000 ft.

***tatsienlua* Gressitt, 1948a: 45** (Fig. 10 a, b) Holotype

Original Combination: *Leptura tatsienlua* Gressitt

Current Name: *Leptura guerryi* Pic, 1902

Current Classification: Cerambycidae: Lepturinae: Lepturini

Type Locality: China: Sichuan Province, near Tatsienlu, 10,000–12,000 ft.

***viridipennis* Gressitt, 1935c: 380** (Fig. 11 a, b) Holotype

Original Combination: *Eustrangalis viridipennis* Gressitt

Current Name: same

Current Classification: Cerambycidae: Lepturinae: Lepturini

Type Locality: Taiwan: Taiheizan

Necydalinae

***hirayamai* Ohbayashi, 1948: 13** (Fig. 12 a, b) Holotype

Original Combination: *Necydalis hirayamai* Ohbayashi

Current Name: same

Current Classification: Cerambycidae: Necydalinae: Necydalini

Type Locality: Taiwan: Inouye

***marginipennis* Gressitt, 1948a: 47** (Fig. 13 a, b) Holotype

Original Combination: *Necydalis marginipennis* Gressitt

Current Name: same

Current Classification: Cerambycidae: Necydalinae: Necydalini

Type Locality: China: Sichuan Province, south of Suifu

Cerambycinae

***apicicornis* Gressitt, 1937: 92** (Fig. 14 a, b) Holotype

Original Combination: *Aglaophis apicicornis* Gressitt

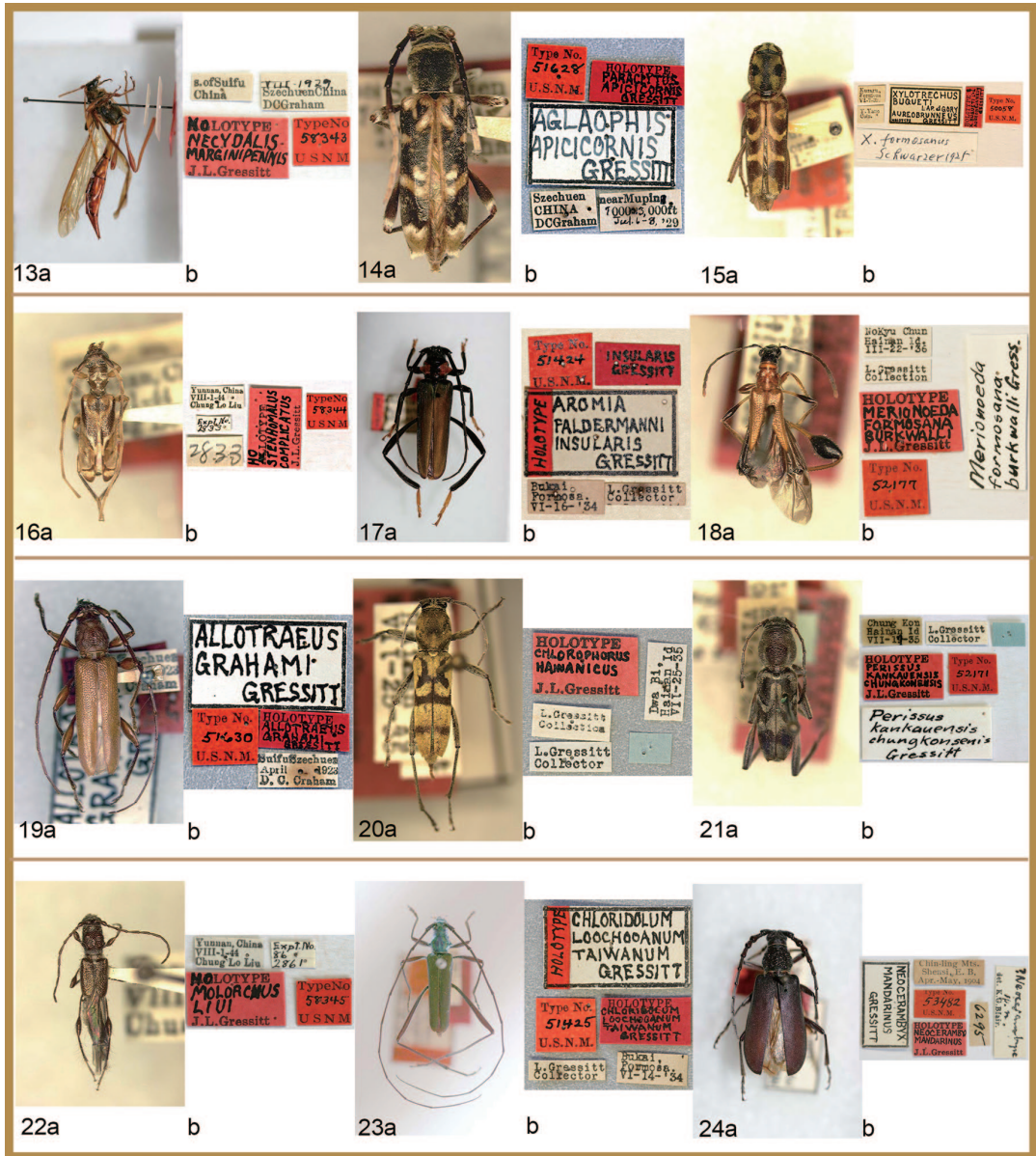


Fig. 13, *Necydalis marginipennis* Gressitt (a, lateral habitus, b, labels); Fig. 14, *Aglaophis apicicornis* Gressitt (a, dorsal habitus; b, labels); Fig. 15, *Xylotrechus buqueti aureobrunneus* Gressitt (a, dorsal habitus; b, labels); Fig. 16, *Stenomalus complicatus* Gressitt (a, dorsal habitus; b, labels); Fig. 17, *Aromia faldermanni insularis* Gressitt (a, dorsal habitus; b, labels); Fig. 18, *Merionoeda (Ocytasia) formosana burkwalli* Gressitt (a, dorsal habitus; b, labels); Fig. 19, *Allotraeus (Nysina) grahami* Gressitt (a, dorsal habitus; b, labels); Fig. 20, *Chlorophorus hainanicus* Gressitt (a, dorsal habitus; b, labels); Fig. 21, *Perissus kankauensis chungkonensis* Gressitt (a, dorsal habitus; b, labels); Fig. 22, *Molorchus liui* Gressitt (a, dorsal habitus; b, labels); Fig. 23, *Chloridolum loochooanum taiwanum* Gressitt (a, dorsal habitus; b, labels); Fig. 24, *Neocerambyx mandarinus* Gressitt (a, dorsal habitus; b, labels).

Current Name: *Paraclytus apicicornis* (Gressitt, 1937)

Current Classification: Cerambycidae: Cerambycinae: Anaglyptini

Type Locality: China: Sichuan Province, near Muping 1,000–3,000 ft.

***buqueti aureobrunneus* Gressitt, 1933: 166** (Fig. 15 a, b) Holotype

Original Combination: *Xylotrechus buqueti aureobrunneus* Gressitt

Current Name: *Xylotrechus formosanus* Schwarzer, 1925

Current Classification: Cerambycidae: Cerambycinae: Clytini

Type Locality: Taiwan: Kuraru

***complicatus* Gressitt, 1948a: 49** (Fig. 16 a, b) Holotype

Original Combination: *Stenhomalus complicatus* Gressitt

Current Name: same

Current Classification: Cerambycidae: Cerambycinae: Oabriini

Type Locality: China: Yunnan Province

***faldermanni insularis* Gressitt, 1936: 90** (Fig. 17 a, b) Holotype

Original Combination: *Aromia faldermanni insularis* Gressitt

Current Name: *Aphrodisium faldermannii yugaii* Kano, 1933

Current Classification: Cerambycidae: Cerambycinae: Callichromatini

Type Locality: Taiwan: Bukai

***formosana burkwalli* Gressitt, 1940: 54** (Fig. 18 a, b) Holotype

Original Combination: *Merionoeda (Ocytasia) formosana burkwalli* Gressitt

Current Name: same

Current Classification: Cerambycidae: Cerambycinae: Molorchini

Type Locality: China: Hainan Province, Hainan Island, Nokyu Chun

***grahami* Gressitt, 1937: 89** (Fig. 19 a, b) Holotype

Original Combination: *Allotraeus (Nysina) grahami* Gressitt

Current Name: same

Current Classification: Cerambycidae: Cerambycinae: Phoracanthini

Type Locality: China: Sichuan Province, Suifu

***hainanicus* Gressitt, 1940: 75** (Fig. 20 a, b) Holotype

Original Combination: *Chlorophorus hainanicus* Gressitt

Current Name: same

Current Classification: Cerambycidae: Cerambycinae: Clytini

Type Locality: China: Hainan Province, Hainan Island, Iwa Bi (label spelled Dwa Bi)

***kankauensis chungkonensis* Gressitt, 1940: 73** (Fig. 21 a, b) Holotype

Original Combination: *Perissus kankauensis chungkonensis* Gressitt

Current Name: *Perissus laetus* Lameere, 1893

Current Classification: Cerambycidae: Cerambycinae: Clytini

Type Locality: China: Hainan Province: Hainan Island, Chung Kon

***liui* Gressitt, 1948a: 51** (Fig. 22 a, b) Holotype

Original Combination: *Molorchus liui* Gressitt

Current Name: same

Current Classification: Cerambycidae: Cerambycinae: Molorchini

Type Locality: China: Yunnan Province

***loochooanum taiwanum* Gressitt, 1936: 91** (Fig. 23 a, b) Holotype

Original Combination: *Chloridolum loochooanum taiwanum* Gressitt

Current Name: *Chloridolum taiwanum* Gressitt, 1936

Current Classification: Cerambycidae: Cerambycinae: Callichromatini

Type Locality: Taiwan: Bukai

***mandarinus* Gressitt, 1939: 209** (Fig. 24 a, b) Holotype

Original Combination: *Neocerambyx mandarinus* Gressitt

Current Name: *Sinopachys mandarinus* (Gressitt, 1939)

Current Classification: Cerambycidae: Cerambycinae: Cerambycini

Type Locality: China: Shaanxi Province, Chin-ling Mts.

***matsushitai* Gressitt, 1936: 97** (Fig. 25 a, b) Holotype

Original Combination: *Demonax matsushitai* Gressitt

Current Name: *Demonax sauteri* Matsushita, 1933

Current Classification: Cerambycidae: Cerambycinae: Clytini

Type Locality: Taiwan: Hassenzan

***miwai* Gressitt, 1936: 100** (Fig. 26 a, b) Holotype

Original Combination: *Chlorophorus miwai* Gressitt

Current Name: same

Current Classification: Cerambycidae: Cerambycinae: Clytini

Type Locality: Taiwan: Rarasan

***nigrosulphureus* Gressitt, 1940: 67** (Fig. 27 a, b) Holotype

Original Combination: *Xylotrechus nigrosulphureus* Gressitt

Current Name: same

Current Classification: Cerambycidae: Cerambycinae: Clytini

Type Locality: China: Hainan Province, Hainan Island, Iwa Bi

Remarks: Label incorrectly states *Clytobius*, described in *Xylotrechus*

***notabiloides* Gressitt, 1936: 96** (Fig. 28 a, b) Holotype

Original Combination: *Raphuma notabiloides* Gressitt

Current Name: *Rhaphuma virens* Matsushita, 1931

Current Classification: Cerambycidae: Cerambycinae: Clytini

Type Locality: Taiwan: Sakahen

***rugicollis* Gressitt, 1948a: 48** (Fig. 29 a, b) Holotype

Original Combination: *Trachylophus rugicollis* Gressitt

Current Name: same

Current Classification: Cerambycidae: Cerambycinae: Cerambycini

Type Locality: China: Sichuan Province, Shin Kai Si, Mt. Omei, 4,400 ft.

***truncatipennis* Gressitt, 1948a: 52** (Fig. 30 a, b) Holotype

Original Combination: *Stenopterus truncatipennis* Gressitt

Current Name: *Lampropterus (Nathriopterus) truncatipennis* (Gressitt, 1948a)

Current Classification: Cerambycidae: Cerambycinae: Stenopterini

Type Locality: China: Shaanxi Province

Lamiinae

***alternata* Gressitt, 1938b: 51** (Fig. 31 a, b) Holotype

Original Combination: *Pterolophia alternata* Gressitt

Current Name: same

Current Classification: Cerambycidae: Lamiinae: Pteropliini

Type Locality: China: Sichuan Province, Suifu

***arctofasciata* Gressitt, 1940: 147** (Fig. 32 a, b) Holotype

Original Combination: *Pterolophia arctofasciata* Gressitt

Current Name: *Pterolophia (Hylobrotus) postfasciculata* Pic, 1934

Current Classification: Cerambycidae: Lamiinae: Pteropliini

Type Locality: China: Hainan Province, Hainan Island, Ta Hian

***basirufus* Gressitt, 1940: 184** (Fig. 33 a, b) Holotype

Original Combination: *Exocentrus basirufus* Gressitt



Fig. 25, *Demonax matsushitai* Gressitt (a, dorsal habitus; b, labels); Fig. 26, *Chlorophorus miwai* Gressitt (a, dorsal habitus; b, labels); Fig. 27, *Xylotrechus nigrosulphureus* Gressitt (a, dorsal habitus; b, labels); Fig. 28, *Raphuma notabiloides* Gressitt (a, dorsal habitus; b, labels); Fig. 29, *Trachylophus rugicollis* Gressitt (a, dorsal habitus; b, labels); Fig. 30, *Stenopterus truncatipennis* Gressitt (a, dorsal habitus and head; b, labels); Fig. 31, *Pterolophia alternata* Gressitt (a, dorsal habitus; b, labels); Fig. 32, *Pterolophia arctofasciata* Gressitt (a, dorsal habitus; b, labels); Fig. 33, *Exocentrus basirufus* Gressitt (a, dorsal habitus; b, labels); Fig. 34, *Stenostola basisuturale* Gressitt (a, dorsal habitus; b, labels); Fig. 35, *Nupserha batesi* Gressitt (a, dorsal habitus; b, labels); Fig. 36, *Olenecamptus bilobus* gressitti Dillon and Dillon (a, dorsal habitus; b, labels).

Current Name: same

Current Classification: Cerambycidae: Lamiinae: Acanthocinini

Type Locality: China: Hainan Province, Hainan Island, Chung Kon

***basisuturale* Gressitt, 1935a: 573** (Fig. 34 a, b) Holotype

Original Combination: *Stenostola basisuturale* Gressitt

Current Name: same

Current Classification: Cerambycidae: Lamiinae: Saperdini

Type Locality: China: Sichuan Province, near Muping 3,000–7,400 ft.

***batesi* Gressitt, 1937: 618** (Fig. 35 a, b) Holotype

Original Combination: *Nupserha batesi* Gressitt

Current Name: *Nupserha testaceipes* Pic, 1926

Current Classification: Cerambycidae: Lamiinae: Phytoeciini

Type Locality: China: Jiangxi Province, Hong Shan

***bilobus gressitti* Dillon and Dillon, 1948: 234** (Fig. 36 a, b) Holotype

Original Combination: *Olenecamptus bilobus gressitti* Dillon and Dillon

Current Name: same

Current Classification: Cerambycidae: Lamiinae: Dorcaschematini

Type Locality: China: Sichuan Province, Suifu

***blairi* Gressitt, 1937: 598** (Fig. 37 a, b) Holotype

Original Combination: *Rhodopis blairi* Gressitt

Current Name: *Nanohammus sinicus* (Pic, 1926)

Current Classification: Cerambycidae: Lamiinae: Lamiini

Type Locality: China: Jiangxi Province, Hong Shan

***brunneus* Gressitt, 1938b: 49** (Fig. 38 a, b) Holotype

Original Combination: *Echthistatodes brunneus* Gressitt

Current Name: same

Current Classification: Cerambycidae: Lamiinae: Morimopsini

Type Locality: China: Sichuan Province, Shin Kai Si, Mt. Omei, 4,400 ft.

***campbelli* Gressitt, 1937: 613** (Fig. 39 a, b) Holotype

Original Combination: *Acanthocinus campbelli* Gressitt

Current Name: *Leiopus (Carinopus) campbelli* (Gressitt, 1937)

Current Classification: Cerambycidae: Lamiinae: Acanthocinini

Type Locality: China: Jiangxi Province, Hong Shan

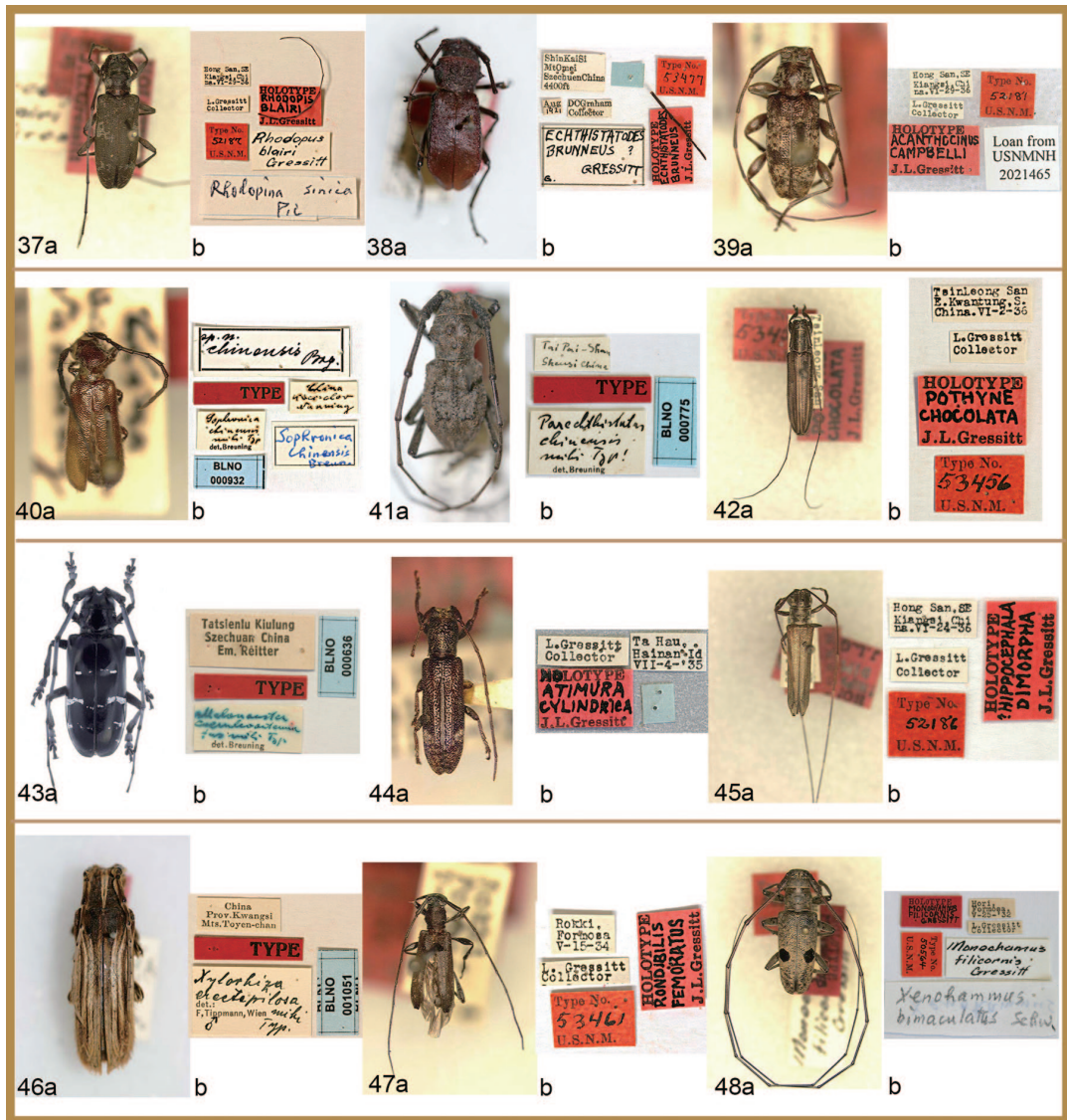


Fig. 37, *Rhodopis blairi* Gressitt (a, dorsal habitus; b, labels); Fig. 38, *Echthistatodes brunneus* Gressitt (a, dorsal habitus; b, labels); Fig. 39, *Acanthocinus campbelli* Gressitt (a, dorsal habitus; b, labels); Fig. 40, *Sophronea chinensis* Breuning (a, dorsal habitus; b, labels); Fig. 41, *Parechthistatus chinensis* Breuning (a, dorsal habitus; b, labels); Fig. 42, *Pothyne chocolata* Gressitt (a, dorsal habitus; b, labels); Fig. 43, *Melanauster coeruleoantennatus* Breuning (a, dorsal habitus; b, labels); Fig. 44, *Atimura cylindrica* Gressitt (a, dorsal habitus; b, labels); Fig. 45, *Hippocephala dimorpha* Gressitt (a, dorsal habitus; b, labels); Fig. 46, *Xylorhiza erectipilosa* Tippmann (a, dorsal habitus; b, labels); Fig. 47, *Rondibilis femoratus* Gressitt (a, dorsal habitus; b, labels); Fig. 48, *Monochamus flicicornis* Gressitt (a, dorsal habitus; b, labels).

***chinensis* Breuning, 1940: 48** (Fig. 40 a, b) Holotype

Original Combination: *Sophronica chinensis* Breuning

Current Name: same

Current Classification: Cerambycidae: Lamiinae: Desmiphorini

Type Locality: China: Guizhou Province

***chinensis* Breuning, 1942a: 132** (Fig. 41 a, b) Holotype

Original Combination: *Parechthistatus chinensis* Breuning

Current Name: same

Current Classification: Cerambycidae: Lamiinae: Lamiini

Type Locality: China: Shaanxi Province, Taipai Shan

***chocolata* Gressitt, 1939: 88** (Fig. 42 a, b) Holotype

Original Combination: *Pothyne chocolata* Gressitt

Current Name: same

Current Classification: Cerambycidae: Lamiinae: Agapanthiini

Type Locality: China: Guangdong Province, Tsin Leong Shan

***coeruleoantennatus* Breuning, 1946: 23** (Fig. 43 a, b) Holotype

Original Combination: *Melanauster coeruleoantennatus* Breuning

Current Name: *Anoplophora coeruleoantennata* (Breuning, 1946)

Current Classification: Cerambycidae: Lamiinae: Lamiini

Type Locality: China: Sichuan Province, Tatsienlu Kiulung

***cylindrica* Gressitt, 1940: 172** (Fig. 44 a, b) Holotype

Original Combination: *Atimura cylindrica* Gressitt

Current Name: same

Current Classification: Cerambycidae: Lamiinae: Apomecynini

Type Locality: China: Hainan Province, Hainan Island, Ta Hau

***dimorpha* Gressitt, 1937: 612** (Fig. 45 a, b) Holotype

Original Combination: *Hippocephala dimorpha* Gressitt

Current Name: same

Current Classification: Cerambycidae: Lamiinae: Pteropliini

Type Locality: China: Jiangxi Province, Hong Shan

***erectepilosa* Tippmann, 1951: 309** (Fig. 46 a, b) Holotype

Original Combination: *Xylorhiza erectepilosa* Tippmann

Current Name: same

Current Classification: Cerambycidae: Lamiinae: Xylorhizini

Type Locality: China: Guangxi Province, Kwangsi Mts., Toyen-chan

***femoratus* Gressitt, 1938a: 165** (Fig. 47 a, b) Holotype

Original Combination: *Rondibilis femoratus* Gressitt

Current Name: same

Current Classification: Cerambycidae: Lamiinae: Acanthocinini

Type Locality: Taiwan: Rokki

***flicornis* Gressitt, 1935c: 380** (Fig. 48 a, b) Holotype

Original Combination: *Monochammus flicornis* Gressitt

Current Name: *Xenohammus bimaculatus* Schwarzer, 1931

Current Classification: Cerambycidae: Lamiinae: Lamiini

Type Locality: Taiwan: Hori

Remarks: The genus *Monochamus* was misspelled as *Monochammus* in Gressitt (1935c)

***flavorubra* Gressitt, 1940: 205** (Fig. 49 a, b) Holotype

Original Combination: *Glenea flavorubra* Gressitt

Current Name: same

Current Classification: Cerambycidae: Lamiinae: Saperdini

Type Locality: China: Hainan Province, Hainan Island, Liamui

***flocculatus paucisetosus* Gressitt, 1938c: 154** (Fig. 50 a, b) Holotype

Original Combination: *Dihammus flocculatus paucisetosus* Gressitt

Current Name: *Acalolepta flocculata paucisetosa* (Gressitt, 1938c)

Current Classification: Cerambycidae: Lamiinae: Lamiini

Type Locality: China: Sichuan Province, SiGiPin 6,000–7,000 ft.

***fulvus* Gressitt, 1938b: 53** (Fig. 52 a, b) Holotype

Original Combination: *Anaesopogonius fulvus* Gressitt

Current Name: same

Current Classification: Cerambycidae: Lamiinae: Desmiphorini

Type Locality: China: Sichuan Province, near Muping, 3,000–7,400 ft.

***granulicollis* Gressitt, 1938a: 166** (Fig. 53 a, b) Holotype

Original Combination: *Miaenia granulicollis* Gressitt

Current Name: *Sciades (Granulimiaenia) granulicollis* (Gressitt, 1938a)

Current Classification: Cerambycidae: Lamiinae: Acanthocinini

Type Locality: Taiwan: Kuraru

Remarks: Specific epithet is misspelled as “*granulicolle*” on label.

***gressitti* Tippmann, 1955: 124** (Fig. 54 a, b) Holotype

Original Combination: *Kamikiria gressitti* Tippmann

Current Name: *Notomulciber (Micromulciber) gressitti* (Tippmann, 1955)

Current Classification: Cerambycidae: Lamiinae: Apomecynini

Type Locality: Taiwan: Musha

***griseomarmorata* Breuning, 1939: 517** (Fig. 55 a, b) Holotype

Original Combination: *Mesosa (Aphelocnemis) griseomarmorata* Breuning

Current Name: same

Current Classification: Cerambycidae: Lamiinae: Mesosini

Type Locality: China: Guangdong Province, Kuangtung, Nanning

***grossescapus* Breuning, 1942b: 117** (Fig. 56 a, b) Holotype

Original Combination: *Dihammus grossescapus* Breuning

Current Name: *Acalolepta grossescapus* (Breuning, 1942)

Current Classification: Cerambycidae: Lamiinae: Lamiini

Type Locality: Taiwan: Kosyum (=Kaohsiung ?)

***hakka* Gressitt, 1937: 597** (Fig. 57 a, b) Holotype

Original Combination: *Falsomesosella hakka* Gressitt

Current Name: *Falsomesosella nigronotata hakka* Gressitt, 1937

Current Classification: Cerambycidae: Lamiinae: Mesosini

Type Locality: China: Guangdong, Yim Na Shan

***hirticornis* Gressitt, 1936: 102** (Fig. 58 a, b) Holotype

Original Combination: *Saimia hirticornis* Gressitt

Current Name: *Agelasta (Parasaimia) hirticornis* (Gressitt, 1936)

Current Classification: Cerambycidae: Lamiinae: Mesosini

Type Locality: Taiwan: Hassenzan

***horiensis hongshanus* Gressitt, 1937: 614** (Fig. 59 a, b) Holotype

Original Combination: *Rondibilis horiensis hongshanus* Gressitt

Current Name: same

Current Classification: Cerambycidae: Lamiinae: Acanthocinini

Type Locality: China: Jiangxi Province, Hong Shan

Remarks: Subspecific epithet misspelled on holotype label.



Fig. 49, *Glenea flavorubra* Gressitt (a, dorsal habitus; b, labels); Fig. 50, *Dihammus flocculatus paucisetosus* Gressitt (a, dorsal habitus; b, labels); Fig. 51, *Sybra formosana* Breuning (a, dorsal habitus; b, labels); Fig. 52, *Anaesopogonius fulvus* Gressitt (a, dorsal habitus; b, labels); Fig. 53, *Miaenia granulicolle* Gressitt (a, dorsal habitus; b, labels); Fig. 54, *Kamikirtia gressitti* Tippmann (a, dorsal habitus; b, labels); Fig. 55, *Mesosa (Aphelocnemia) griseomarmorata* Breuning (a, dorsal habitus; b, labels); Fig. 56, *Dihammus grossescapus* Breuning (a, dorsal habitus; b, labels); Fig. 57, *Falsomesosella hakka* Gressitt (a, dorsal and lateral habitus; b, labels); Fig. 58, *Saimia hirticornis* Gressitt (a, dorsal habitus; b, labels); Fig. 59, *Rondibilis horiensis hongshamus* Gressitt (a, dorsal habitus; b, labels); Fig. 60, *Psacotha inarmata* Gressitt (a, dorsal habitus; b, labels).

***inarmata* Gressitt, 1940: 92** (Fig. 60 a, b) Holotype

Original Combination: *Psacotha inarmata* Gressitt
Current Name: *Macrochenus tonkinensis inarmata* (Gressitt, 1940)
Current Classification: Cerambycidae: Lamiinae: Lamiini
Type Locality: China: Hainan Province, Hainan Island, Iwa Bi

***kiangsina* Gressitt, 1937: 601** (Fig. 62 a, b) Holotype

Original Combination: *Pterolophia kiangsina* Gressitt
Current Name: same
Current Classification: Cerambycidae: Lamiinae: Pteropliini
Type Locality: China: Jiangxi Province, Hong Shan

***lama* Breuning, 1943: 20** (Fig. 96 a, b) Holotype

Original Combination: *Pterolophia lama* Breuning
Current Name: same
Current Classification: Cerambycidae: Lamiinae: Pteropliini
Type Locality: China: Tibet

***lateralba* Gressitt, 1937: 611** (Fig. 63 a, b) Holotype

Original Combination: *Pothyne (Lateralba) lateralba* Gressitt
Current Name: same
Current Classification: Cerambycidae: Lamiinae: Agapanthiini
Type Locality: China: Jiangxi Province, Tai Au Hong

***leptissimus* Gressitt, 1936: 103** (Fig. 64 a, b) Holotype

Original Combination: *Pseudocalamobius leptissimus* Gressitt
Current Name: same
Current Classification: Cerambycidae: Lamiinae: Agapanthiini
Type Locality: Taiwan: Arisan

***leucostictica rustica* Gressitt, 1940: 124** (Fig. 65 a, b) Holotype

Original Combination: *Coptops leucostictica rustica* Gressitt
Current Name: same
Current Classification: Cerambycidae: Lamiinae: Mesosini
Type Locality: China: Hainan Province, Hainan Island, Iwa Bi

***longicollis* Gressitt, 1935d: 287** (Fig. 66 a, b) Holotype

Original Combination: *Neoserixia longicollis* Gressitt



Fig. 61, *Coptops japonica* Breuning (a, dorsal habitus; b, labels). Fig. 62, *Pterolophia kiangsina* Gressitt (a, dorsal habitus; b, labels); Fig. 63, *Pothyne (Lateralba) lateralba* Gressitt (a, dorsal habitus; b, labels); Fig. 64, *Pseudocalamobius leptissimus* Gressitt (a, dorsal habitus; b, labels); Fig. 65, *Coptops leucostictica rustica* Gressitt (a, dorsal habitus; b, labels); Fig. 66, *Neoserixia longicollis* Gressitt (a, dorsal habitus; b, labels); Fig. 67, *Neoserixia longicollis infasciatus* Gressitt (a, dorsal habitus, b, labels); Fig. 68, *Glenea luteicollis* Gressitt (a, dorsal habitus; b, labels); Fig. 69, *Presates marmoratus* Gressitt (a, dorsal habitus; b, labels); Fig. 70, *Euseboides matsudai* Gressitt (a, dorsal habitus; b, labels); Fig. 71, *Ropica ngauchiliae* Gressitt (a, dorsal habitus; b, labels); Fig. 72, *Anastathes parva* Gressitt (a, dorsal habitus; b, labels).

Current Name: same

Current Classification: Cerambycidae: Lamiinae: Saperdini

Type Locality: Taiwan: Chirifu

***longicollis infasciatus* Gressitt, 1935d: 289** (Fig. 67 a, b) Holotype

Original Combination: *Neoserixia longicollis infasciatus* Gressitt

Current Name: same

Current Classification: Cerambycidae: Lamiinae: Saperdini

Type Locality: Taiwan: Hassenzan

***luteicolle* Gressitt, 1935b: 190** (Fig. 68 a, b) Holotype

Original Combination: *Glenea luteicolle* Gressitt

Current Name: same

Current Classification: Cerambycidae: Lamiinae: Saperdini

Type Locality: Taiwan: Hassenzan

***marmoratus* Gressitt, 1940: 158** (Fig. 69 a, b) Holotype

Original Combination: *Presates marmoratus* Gressitt

Current Name: *Pseudoterinaea bicoloripes* (Pic, 1926)

Current Classification: Cerambycidae: Lamiinae: Pteropliini

Type Locality: China: Hainan Province, Hainan Island, Iwa Bi

Remarks: The labels indicate "*Phesates marmoratus*" but it was published as "*Presates marmoratus*".

***matsudai* Gressitt, 1938a: 163** (Fig. 70 a, b) Holotype

Original Combination: *Euseboides matsudai* Gressitt

Current Name: same

Current Classification: Cerambycidae: Lamiinae: Desmiphorini

Type Locality: Taiwan: Horisha

***ngauchiliae* Gressitt, 1940: 163** (Fig. 71 a, b) Holotype

Original Combination: *Ropica ngauchiliae* Gressitt

Current Name: same

Current Classification: Cerambycidae: Lamiinae: Apomecynini

Type Locality: China: Hainan Province, Hainan Island, Ta Hian

***parva* Gressitt, 1935b: 193** (Fig. 72 a, b) Holotype

Original Combination: *Anastathes parva* Gressitt

Current Name: same

Current Classification: Cerambycidae: Lamiinae: Astathini

Type Locality: Taiwan: Bukai

***permutans paucipunctatus* Gressitt, 1938a: 157** (Fig. 73 a, b) Holotype

Original Combination: *Dihammus permutans paucipunctatus* Gressitt

Current Name: *Acalolepta permutans paucipunctata* (Gressitt, 1938a)

Current Classification: Cerambycidae: Lamiinae: Lamiini

Type Locality: Taiwan: Bukai

***rubra* Gressitt, 1938b: 49** (Fig. 74 a, b) Holotype

Original Combination: *Psacotheta rubra* Gressitt

Current Name: same

Current Classification: Cerambycidae: Lamiinae: Lamiini

Type Locality: China: Sichuan Province, Chengdu, 1,700 ft.

***rufimembris* Gressitt, 1937: 608** (Fig. 75 a, b) Holotype

Original Combination: *Microleropsis rufimembris* Gressitt

Current Name: same

Current Classification: Cerambycidae: Lamiinae: Gyartini

Type Locality: China: Fujian Province, Gang-ken, southwest Fukien

***rufonigra* Gressitt, 1940: 175** (Fig. 76 a, b) Holotype

Original Combination: *Terinaea rufonigra* Gressitt

Current Name: same

Current Classification: Cerambycidae: Lamiinae: Desmiphorini

Type Locality: China: Hainan Province, Hainan Island, Ta Han

***serrata* Gressitt, 1938b: 52** (Fig. 78 a, b) Holotype

Original Combination: *Pterolophia serrata* Gressitt

Current Name: same

Current Classification: Cerambycidae: Lamiinae: Pteropliini

Type Locality: China: Sichuan Province, Muping, 5,000–6,000 ft.

***setosa* Gressitt, 1937: 603** (Fig. 79 a, b) Holotype

Original Combination: *Enispia setosa* Gressitt

Current Name: *Egesina setosa* (Gressitt, 1937)

Current Classification: Cerambycidae: Lamiinae: Pteropliini

Type Locality: China: Jiangxi Province, Hong Shan

***sinica* Gressitt, 1937: 616** (Fig. 80 a, b) Holotype

Original Combination: *Serixia sinica* Gressitt

Current Name: same

Current Classification: Cerambycidae: Lamiinae: Saperdini

Type Locality: China: Jiangxi Province, Hong Shan

***sinicum* Breuning, 1948: 57** (Fig. 81 a, b) Holotype

Original Combination: *Eodorcadion (Ornatodorcadion) sinicum* Breuning

Current Name: *Eodorcadion sinicum* Breuning, 1948

Current Classification: Cerambycidae: Lamiinae: Dorcadionini

Type Locality: China: (no specific locality data)

***spinifera* Gressitt, 1948b: 57** (Fig. 82 a, b) Holotype

Original Combination: *Nupserha spinifera* Gressitt

Current Name: same

Current Classification: Cerambycidae: Lamiinae: Phytoeciini

Type Locality: China: Sichuan Province, Yachow to Mupin, 2,000–5,000 ft.

***strandi* Breuning, 1935: 173** (Fig. 83 a, b) Holotype

Original Combination: *Rhodopis strandi* Breuning

Current Name: *Nanohammus sinicus* (Pic, 1926)

Current Classification: Cerambycidae: Lamiinae: Rhodopini

Type Locality: China: Jiangsu Province, Nanjing

***subalba* Gressitt, 1938a: 162** (Fig. 84 a, b) Holotype

Original Combination: *Falsomesosella subalba* Gressitt

Current Name: same

Current Classification: Cerambycidae: Lamiinae: Mesosini

Type Locality: Taiwan: Kuraru

***subbidentatus* Gressitt, 1937: 615** (Fig. 85 a, b) Holotype

Original Combination: *Exocentrus subbidentatus* Gressitt

Current Name: same

Current Classification: Cerambycidae: Lamiinae: Pogonocherini

Type Locality: China: Guangdong Province, Tsin Leong Shan

***subdenudatus* Gressitt, 1938a: 153** (Fig. 86 a, b) Holotype

Original Combination: *Dolophrades subdenudatus* Gressitt



Fig. 73, *Dihammus permutans paucipunctatus* Gressitt (a, dorsal habitus; b, labels); Fig. 74, *Psaethea rubra* Gressitt (a, dorsal habitus; b, labels); Fig. 75, *Microleropsis rufimembris* Gressitt (a, dorsal habitus; b, labels); Fig. 76, *Terinaea rufonigra* Gressitt (a, dorsal habitus; b, labels); Fig. 77, *Moechotypa semenovi* Heyrovský (a, dorsal habitus; b, labels); Fig. 78, *Pterolophia serrata* Gressitt (a, dorsal habitus; b, labels); Fig. 79, *Enispia setosa* Gressitt (a, dorsal habitus; b, labels); Fig. 80, *Serixia sinica* Gressitt (a, dorsal habitus; b, labels); Fig. 81, *Eodorcadion (Ornatodorcadion) sinicum* Breuning (a, dorsal habitus; b, labels); Fig. 82, *Nupserha spinifera* Gressitt (a, dorsal habitus; b, labels); Fig. 83, *Rhodopis strandi* Breuning (a, dorsal habitus; b, labels); Fig. 84, *Falsomesosella subalba* Gressitt (a, dorsal habitus; b, labels).

Current Name: *Dolophrades annulicornis* (Schwarzer, 1925)

Current Classification: Cerambycidae: Lamiinae: Parmenini

Type Locality: Taiwan: Hori

***subglabrata* Gressitt, 1938b: 54** (Fig. 87 a, b) Holotype

Original Combination: *Sydonia subglabrata* Gressitt

Current Name: *Zotalemimon subglabrata* (Gressitt, 1938b)

Current Classification: Cerambycidae: Lamiinae: Apodasyini

Type Locality: China: Sichuan, Muping 5,000–6,000 ft.

***submarmorata* Gressitt, 1936: 107** (Fig. 88 a, b) Holotype

Original Combination: *Arisania submarmorata* Gressitt

Current Name: *Paruraecha (Arisania) submarmorata* (Gressitt, 1936)

Current Classification: Cerambycidae: Lamiinae: Lamiini

Type Locality: Taiwan: Arisan

***szechuanus* Gressitt, 1938c: 155** (Fig. 89 a, b) Holotype

Original Combination: *Dihammus szechuanus* Gressitt

Current Name: *Acalolepta szechuana* (Gressitt, 1938c)

Current Classification: Cerambycidae: Lamiinae: Lamiini

Type Locality: China: Sichuan Province, Shin Kai Si, Mt. Omei, near Kiating, 4,400 ft.

***taiwanensis* Gressitt, 1936: 105** (Fig. 90 a, b) Holotype

Original Combination: *Metopoplectus taiwanensis* Gressitt

Current Name: *Cleptometopus taiwanensis* (Gressitt, 1936)

Current Classification: Cerambycidae: Lamiinae: Agapanthiini

Type Locality: Taiwan: Sakahen

***tricostata* Gressitt, 1947: 547** (Fig. 91 a, b) Holotype

Original Combination: *Linda tricostata* Gressitt

Current Name: *Linda semivittata* (Fairmaire, 1887)

Current Classification: Cerambycidae: Lamiinae: Saperdini

Type Locality: China: Yunnan Province

***yunnana* Breuning, 1957: 11** (Fig. 92 a, b) Holotype

Original Combination: *Eryssamena yunnana* Breuning

Current Name: *Rondibilis yunnana* (Breuning, 1957)

Current Classification: Cerambycidae: Lamiinae: Acanthocinini

Type Locality: China: Yunnan Province, Vallis flumin, Soling-ho

yunnanus Breuning, 1942b: 172 (Fig. 93 a, b) Holotype

Original Combination: *Pseudocalamobius yunnanus* Breuning

Current Name: same

Current Classification: Cerambycidae: Lamiinae: Agapanthiini

Type Locality: China: Yunnan Province, Peycupin



Fig. 85, *Exocentrus subbidentatus* Gressitt (a, dorsal habitus; b, labels); Fig. 86, *Dolophrades subdenudatus* Gressitt (a, dorsal habitus; b, labels); Fig. 87, *Sydonia subglabrata* Gressitt (a, dorsal habitus; b, labels); Fig. 88, *Arisania submarmorata* Gressitt (a, dorsal habitus; b, labels); Fig. 89, *Dihammus szechuanus* Gressitt (a, dorsal habitus; b, labels); Fig. 90, *Metopoplectus taiwanensis* Gressitt (a, dorsal habitus; b, labels); Fig. 91, *Linda tricostrata* Gressitt (a, dorsal and lateral habitus; b, labels); Fig. 92, *Eryssamena yunnana* Breuning (a, dorsal habitus; b, labels); Fig. 93, *Pseudocalamobius yunnanus* Breuning (a, dorsal habitus; b, labels); Fig. 94, *Noemia incompta* Gressitt (a, dorsal habitus; b, labels); Fig. 95, *Noemia submetallica* Gressitt (a, dorsal habitus; b, labels); Fig. 96, *Pterolophia lama* Breuning (a, dorsal habitus; b, labels).



Fig. 97, *Anoplodermomorpha discale* Gressitt (a, dorsal habitus; b, labels); Fig. 98, example of one drawer of primary types in the Smithsonian Institution collection.

Disteniidae

incompta Gressitt, 1935b: 181 (Fig. 94 a, b) Holotype

Original Combination: *Noemia incompta* Gressitt

Current Name: same

Current Classification: Disteniidae: Disteniinae: Disteniini

Type Locality: Taiwan: Hassenzan

submetallica Gressitt, 1940: 29 (Fig. 95 a, b) Holotype

Original Combination: *Noemia submetallica* Gressitt

Current Name: same

Current Classification: Disteniidae: Disteniinae: Disteniini

Type Locality: China: Hainan Province, Hainan Island, Ta Han

Specimens labeled as holotypes but determined to not be primary types

***formosana* Breuning, 1964: 305 (Fig. 51 a, b)**

Original Combination: *Sybra formosana* Breuning

Remarks: This is actually a paratype of a species whose holotype is deposited in Senckenberg Naturhistorische Sammlungen, Dresden, Germany.

***japonica* Breuning, 1936: 311 (Fig. 61 a, b)**

Original Combination: *Coptops japonica* Breuning

Remarks: This is actually a paratype of a species whose holotype is deposited in the Muséum national d'Histoire naturelle, Paris, France.

***semenovi* Heyrovský, 1934: 172 (Fig. 77 a, b)**

Original Combination: *Moechotypa semenovi* Heyrovský

Remarks: This is actually a paratype of a species whose holotype is deposited in the Czech National Insect Collection, Prague, Czech Republic.

Acknowledgements

This work is the culmination of an enormous effort and collaboration by many individuals over the past 10 years. Funding has come via contracts from the USDA and Smithsonian Institution, and we thank both organizations for recognizing the value and urgency of this research. Rick Stanley (Harvard University) took many of the dorsal habitus photographs as a volunteer in the summer of 2004. Additional photographs were taken by Alexander Boyson (Rockville, Maryland) who interned in 2008. Elisabeth Roberts (Systematic Entomology Laboratory, USDA) took most of the label images as well as dorsal habitus images of recently acquired holotypes. Remaining images were taken by the authors. The original descriptions were checked and data verified by all involved, and Michael Biondi (Charleston, South Carolina). Additional fact checking was provided by Miguel Monné (Rio de Janeiro, Brazil) and Gérard Tavakilian (Paris, France). Finally, we thank Norman Woodley for consultation regarding the format of this work and for providing a critical review. Special thanks to Mei-Ying Lin for inviting and reviewing this contribution. The USDA is an equal opportunity provider and employer.

References

- Bousquet, Y., Heffern, D.J., Bouchard, P., & Nearn, E.H. (2009) Catalogue of family-group names in Cerambycidae (Coleoptera). *Zootaxa*, 2321, 1–80.
- Breuning, S. (1935) Novae species Cerambycidarum. I. *Folia Zoologica et Hydrobiologica*, 7(2), 153–174.
- Breuning, S. (1936) Novae species Cerambycidarum. V. *Festschrift zum 60. Geburtstag von Professor Dr. Embrik Strand*, 1, 274–325.
- Breuning, S. (1939) Études sur les Lamiaires (Col., Cerambycidae). Huitième tribu: Mesosini Thomson. *Novitates Entomologiques*, 3ème supplément (50–66), 393–526.
- Breuning, S. (1940) Novae species Cerambycidarum. VIII. *Folia Zoologica et Hydrobiologica*, 10, 37–85.
- Breuning, S. (1942a) Études sur les Lamiaires (Col., Cerambycidae). XI. Phrissomini. *Novitates Entomologiques*, 3(88), 102–136.
- Breuning, S. (1942b) Novae species Cerambycidarum. XI. *Folia Zoologica et Hydrobiologica*, 11, 113–175.
- Breuning, S. (1943) Novae species Cerambycidarum. XII. *Folia Zoologica et Hydrobiologica*, 12, 12–66.
- Breuning, S. (1946) Nouveaux Cerambycides paléarctiques (3ème note). *Miscellanea Entomologica*, 43(3), 21–24.
- Breuning, S. (1948) Nouvelles formes de Dorcadion (3eme. note). *Miscellanea Entomologica*, 45, 57–64.
- Breuning, S. (1957) Neue Lamiinae aus der Sammlung F. Tippmann. *Entomologisches Nachrichtenblatt österreichischer und Schweizer Entomologen*, 8(3), 10–16.
- Breuning, S. (1964) Neue Lamiiden aus den Beständen des Staatlichen Museums für Tierkunde in Dresden. *Reichenbachia*, 68(2), 301–310.
- Danilevsky, M.L. (2010) Additions and corrections to the new Catalogue of Palaearctic Cerambycidae (Coleoptera) edited by I. Löbl & A. Smetana, 2010. *Russian Entomological Journal*, 19(3), 215–239.
- Danilevsky M.L. (2011) Additions and corrections to the new Catalogue of Palaearctic Cerambycidae (Coleoptera) edited by I. Löbl & A. Smetana, 2010. Part. II. *Russian Entomological Journal*, 19(4), 313–324.
- Danilevsky M.L. (2012a) Additions and corrections to the new Catalogue of Palaearctic Cerambycidae (Coleoptera) edited by I. Löbl & A. Smetana, 2010. Part. III. *Munis Entomology & Zoology*, 7(1), 109–173.
- Danilevsky, M.L. (2012b) Additions and corrections to the new Catalogue of Palaearctic Cerambycidae (Coleoptera) edited by I. Löbl and A. Smetana, 2010. Part. IV.- *Humanity Space. International Almanac*, 1(1), 86–136.
- Danilevsky, M.L. (2012c) Additions and corrections to the new Catalogue of Palaearctic Cerambycidae (Coleoptera) edited by I. Löbl & A. Smetana, 2010. Part. V.- *Humanity Space. International Almanac*, 1(3), 695–741.
- Dillon, L.S. & Dillon, E.S. (1948) The Tribe Dorcaschematini (Coleoptera: Cerambycidae). *Transactions of the American Entomological Society*, 73, 173–298.
- Gressitt, J.L. (1933) New longicorns from the Japan Empire (Coleoptera, Cerambycidae). *Pan-Pacific Entomologist*, 9, 163–170.
- Gressitt, J.L. (1935a) New longicorn beetles from China (Coleoptera, Cerambycidae). *Lingnan Science Journal*, 14(4), 567–574.

- Gressitt, J.L. (1935b) New species and records of longicorns from Formosa (Coleoptera Cerambycidae). *The Philippine Journal of Sciences*, 57(2): 181–194.
- Gressitt, J.L. (1935c) New longicorn Beetles from the Japanese Empire, II (Coleoptera: Cerambycidae). *The Philippine Journal of Sciences*, 55(4): 379–386.
- Gressitt, J.L. (1935d) New longicorn beetles of the subfamily Lamiinae from Formosa (Coleoptera: Cerambycidae). *Transactions of the Natural History Society of Formosa*, 25(143), 286–292.
- Gressitt, J.L. (1935e) New longicorn beetles from the Philippines, Borneo and Siam (Coleoptera, Cerambycidae). *The Philippine Journal of Sciences*, 58(2): 267–280
- Gressitt, J.L. (1936) New longicorn beetles from Formosa, III (Coleoptera, Cerambycidae). *The Philippine Journal of Sciences*, 61(1), 89–111.
- Gressitt, J.L. (1937) New longicorn beetles from China, IV (Coleoptera, Cerambycidae). *Lingnan Science Journal*, 16(4), 595–621.
- Gressitt, J.L. (1938a) New longicorn beetles from Formosa, IV (Coleoptera, Cerambycidae). *The Philippine Journal of Sciences*, 65(3), 147–173.
- Gressitt, J.L. (1938b) New Longicorn beetles from China, V (Coleoptera, Cerambycidae). *Lingnan Science Journal*, 17(1), 45–56.
- Gressitt, J.L. (1938c) New longicorn beetles from China, VI (Coleoptera, Cerambycidae). *Lingnan Science Journal*, 17(2), 151–159.
- Gressitt, J.L. (1939a) A study of the longicorn beetles of Kwangtung Province, S., China (Coleoptera, Cerambycidae). *Lingnan Science Journal*, 18(1), 1–122.
- Gressitt, J.L. (1939b) New longicorn Beetles from China, VII (Coleoptera: Cerambycidae). *Lingnan Science Journal*, 18, 209–216.
- Gressitt, J.L. (1940) The longicorn beetles of Hainan Island (Coleoptera, Cerambycidae). *The Philippine Journal of Sciences*, 72(1–2), 1–239.
- Gressitt, J.L. (1947) Chinese longicorn beetles of the genus *Linda* (Coleoptera, Cerambycidae). *Annals of the Entomological Society of America*, 40(3), 545–555.
- Gressitt, J.L. (1948a) New longicorn beetles from China, XII (Col.: Ceramb.). *Lingnan Science Journal*, 22, 43–52.
- Gressitt, J.L. (1948b) Chinese longicorn beetles of the genus *Nupserha* (Col., Ceramb.). *Lingnan Science Journal*, 22, 55–68.
- Gressitt, J.L. (1951) Longicorn beetles of China. In: Lapesme, P. (Ed.), *Longicornia. Études et notes sur les longicornes*. Volume II. Paul Lechevalier, Paris, 1–667.
- Heyrovský, L. (1933) *Flabelloprionus* Gen. Nov. (Col. Cerambycidae). *Sborník entomologického oddelení národního musea v Praze*, 11(91), 133–134.
- Heyrovský, L. (1934) Funter Beitrag Zur Kenntnis Der Cerambyciden aus der Chinesischen Provinz Szechuan (Col. Ceramb.). *Časopis Československé Společnosti Entomologické*, 31, 171–173.
- ICZN - International Commission of Zoological Nomenclature (1999) *International Code of Zoological Nomenclature*. The International Trust for Zoological Nomenclature, London, 306 pp.

- Lingafelter, S.W., Monné, M.A., & Nearn, E.H. (2012) Online Image Database of Cerambycidae Primary Types of the Smithsonian Institution. Available from: www.elaphidion.com [last accessed December 15, 2012]
- Löbl I. & Smetana, A. (2010) *Catalogue of Palaearctic Coleoptera, Vol. 6*. Stenstrup: Apollo Books, 373 pp.
- Löbl I. & Smetana, A. (2011) Errata for volume 6, pp. 35–61. *In*: I. Löbl and A. Smetana (ed.): *Catalogue of Palaearctic Coleoptera, Vol. 7*. Stenstrup, Denmark, Apollo Books, 373 pp.
- Monné, M.A. & Bezark, L.G. (2012) Checklist of the Oxypeltidae, Vesperidae, Disteniidae and Cerambycidae, (Coleoptera) of the Western Hemisphere (updated through December 31, 2011). Available from: [www.http://plant.cdfa.ca.gov/byciddb/documents.html](http://plant.cdfa.ca.gov/byciddb/documents.html) [last accessed November 15, 2012]
- Ohbayashi, K. (1948) Studies of Longicornia. *The Entomological Review of Japan*, 1 (1): 12–14.
- Tavakilian, G. & Chevillotte, H. (2012) Base de données Titan sur les Cerambycides ou Longicornes. <http://lully.snv.jussieu.fr/titan/index.html>
- Tippmann, F.F. (1951) Beiträge zur Kenntnis der Cerambyciden (Col.). *Mitteilungen der Münchener Entomologische Gesellschaft*, 41, 291–328.
- Tippmann, F.F. (1955) Zur Kenntnis der Cerambycidenfauna Fukiens (Süd-Ost-China). *Koleopterologische Rundschau*, 33, 88–137.