

Taxonomic notes relating to *Glenea diversenotata* Schwarzer and *G. quadriguttata* Pic (Coleoptera, Cerambycidae, Lamiinae)

Mei-Ying Lin¹, Steven W. Lingafelter²

1 Key Laboratory of Zoological Systematics and Evolution, Institute of Zoology, Chinese Academy of Sciences, Beichen West Road, Chaoyang Dist., Beijing, 100101, China **2** Systematic Entomology Lab, ARS, USDA, National Museum of Natural History, MRC-168, P.O. Box 37012, Washington, DC 20013-7012, U. S. A.

Corresponding authors: Mei-Ying Lin (linmeiying@ioz.ac.cn); Steven W. Lingafelter (elaphidion@gmail.com)

Academic editor: Ann Ray | Received 6 December 2015 | Accepted 8 April 2016 | Published 4 May 2016

<http://zoobank.org/750A2837-0038-499B-9AB2-0FD7213DBC4B>

Citation: Lin M-Y, Lingafelter SW (2016) Taxonomic notes relating to *Glenea diversenotata* Schwarzer and *G. quadriguttata* Pic (Coleoptera, Cerambycidae, Lamiinae). ZooKeys 586: 135–144. doi: 10.3897/zookeys.586.7423

Abstract

Glenea diversenotata Schwarzer, 1925 is reinstated from a subspecies of *G. tonkinea* Aurivillius, 1925 to species level and *G. neohumerosa* Lin & Yang, 2011 is a new junior synonym. Some biological information on *G. diversenotata* is recorded for the first time, including pictures of the larva and pupa. *G. quadriguttata* Pic, 1926 is reinstated from a subspecies of *G. lacteomaculata* Schwarzer, 1925 to species level. Lectotypes for *G. lacteomaculata* and *G. quadriguttata* are designated. A modified key to the related species is presented.

Keywords

Saperdini, new synonym, lectotype, Taiwan, Oriental region

Introduction

Glenea diversenotata Schwarzer, 1925 and *G. quadriguttata* Pic, 1926 were described from Taiwan and N. Vietnam, respectively. Later, the former was downgraded as a subspecies of *G. tonkinea* Aurivillius, 1925 and the latter as a subspecies of *G. lacteomaculata* Schwarzer, 1925 by Breuning (1956). Comparison to the type materials, however, reveals that each of them should be reinstated to species level from subspecies level. We therefore present the new taxonomic decisions, justifications, and full synonymies below.

Materials

Types and other material studied are deposited in the following institutions:

IZAS	Institute of Zoology, Chinese Academy of Sciences, Beijing, China
MNHN	Muséum national d'Histoire naturelle, Paris, France
SMF	Forschungsinstitut und Naturmuseum Senckenberg, Frankfurt-am-Main, Germany
SDEI	Senckenberg Deutsches Entomologisches Institut, Müncheberg, Germany

Results

Glenea diversenotata Schwarzer, 1925

Glenea diversenotata Schwarzer, 1925: 152. Type locality: China, Taiwan, Kosempo.
Type depository: SDEI.

Glenea (*s. str.*) *diversenotata*; Gressitt 1951: 575.

Glenea (*Glenea*) *tonkinea* subsp. *diversenotata*; Breuning 1956b: 743; Breuning 1966: 689.

Glenea (*Glenea*) *tonkinea diversenotata*; Yu and Nara 1988: 45, 92, pl. 20, fig. 23; Yu, Nara and Chu 2002: 68, 119, pl. 25, fig. 11; Löbl and Smetana 2010: 327.

Glenea (*G.*) *tonkinea* subsp. *diversenotata*; Nakamura, Makihara, Saito 1992: 104; Nakamura et al. 2014: 175.

Glenea diversenotata; Hua 2002: 210; Behne and Gaedike 2013: 177.

Glenea tonkinea diversenotata; Hua 2002: 210; Hua et al. 2009, 219, 360 (the picture pl. LXXXIV, fig. 967 is a *G. coomani* Pic).

Glenea neohumerosa Lin & Yang, 2011: 62, figs 12–23. **New synonym.**

Glenea neohumerosa; Lin 2015a: 204, fig. 205-3; 2015b: 290, figs 1859448, 1859455, 1859450.

Remarks. Breuning (1956) treated *G. diversenotata* Schwarzer as a subspecies of *G. tonkinea* Aurivillius, 1925. The first author examined a photograph of the holotype of *G. diversenotata* Schwarzer, 1925 (taken by Nobuo Ohbayashi, Japan) and a photograph of a live specimen matching it from Taiwan (taken by Yu-Long Lin, Taiwan). Our study of these additional materials necessitates a new synonymy of *G. neohumerosa* Lin & Yang, 2011. We can find no morphological differences to maintain them as separate species. Likewise, our examination of the types of *G. diversenotata* and *G. tonkinea* leads us to review the taxonomic position of them since Breuning (1956) that *G. diversenotata* is a subspecies of *G. tonkinea*. We can find no morphological support for that treatment by Breuning. They are easily separated from each other by the following characters – *Glenea tonkinea*: vertex and occiput of the head with two separate, longitudinal vittae of white pubescence; white elytral maculae more slender and transverse; outer, basal, white, elytral maculae anterolaterally positioned relative to the larger, basal, sutural maculae; outer apical spine of



Figures 1–5. *Glenea diversenotata* Schwarzer, 1925 from Hainan, Diaoluoshan, taken in 2010.IV.23, by Zi-Wei Yin. **1** The broad-leaved forest located in Hainan, Diaoluoshan **2–3** A large decomposing log with *Glenea diversenotata* Schwarzer, 1925 inside **4** Larva **5** Pupa.

elytra weakly produced; — *G. diversenotata*: vertex and occiput with vittae partially fused, not separate; white elytral maculae more rounded; outer basal elytral maculae parallel with the larger, basal, sutural maculae; outer apical spine of elytra pronounced.

Distribution. China (Fujian, Taiwan, Hainan, Guangxi); Vietnam (Tonkin).

Additional specimens examined (Lin and Yang 2011). Holotype, female (Figs 9a, 9b), Formosa, Kosempo, 1912.VI.7, leg. H. Sauter (SDEI); 1 male, Taiwan, Pingdong County, Mt. Dahanshan, 2010. VIII.29, leg. Yu-Long Lin & Wenhsin Lin (examined through a live picture, specimen is deposited in private collection of Yu-Long Lin, Taiwan).

Biological notes. A larva (Fig. 4), two pupae (Fig. 5) and two adults (Fig. 6) were extracted from a large, decomposing log (Figs 2–3) found from a creek valley in a broad-leaved evergreen forest (Fig. 1) in 23 April, 2010 (according to personal communication with Zi-Wei Yin, in December, 2013). The stream is located in Hainan, Lingshui County, Diaoluoshan, ca. 935 m, 18°43'36"N, 100°52'14"E. The fresh emerged adults (Fig. 6) have the pubescence white which becomes yellow afterwards (Figs 7–8), and becoming white again after pinned and dried.

Glenea tonkinea Aurivillius, 1925

Glenea tonkinea Aurivillius, 1925: 521, fig. 160. Type locality: Vietnam, Tonkin, Hoa Binh. Type depository: MNHN.

Glenea (*s. str.*) *tonkinea*; Gressitt 1951: 580.

Glenea (*Glenea*) *tonkinea* m. *basirufofemorata* Breuning, 1956a: 698; Breuning 1956b: 743; Breuning 1966: 689.

Glenea (*Glenea*) *tonkinea*; Breuning 1966: 689.

Glenea (*Glenea*) *tonkinea* m. *apicetruncata* Breuning, 1956b: 743; Breuning 1966: 689.

Glenea (*G.*) *tonkinea*; Nakamura, Makihara, Saito, 1992: 104; Nakamura et al. 2014: 175.

Glenea tonkinea tonkinea; Hua, Nara and Yu 1993: 165, 297, pl. XXII, fig. 370b; Hua 2002: 210; Hua et al. 2009, 219, 360, pl. LXXXIV, fig. 967.

Glenea (*Glenea*) *tonkinea tonkinea*; Löbl and Smetana 2010: 327.

Glenea tonkinea; Lin and Yang 2011: 67, figs 30–33.

Remarks. The record from Taiwan (Nakamura, Makihara, Saito, 1992; Hua 2002; Löbl and Smetana 2010; Nakamura et al. 2014) is doubtful. This taxon was not mentioned in the four volumes of Taiwanese fauna book (Yu and Nara 1988; Yu, Nara and Chu 2002; Chou 2004, 2008).

Distribution. China (Guangdong, Hainan, Guangxi, Taiwan?); Vietnam (Tonkin), Myanmar.

Glenea lacteomaculata Schwarzer, 1925, lectotype designation

Glenea lacteomaculata Schwarzer, 1925: 151. Type locality: China, Taiwan, Kosempo, Sokutsu. Type depository: SDEI.



Figures 6–8. *Glenea diversenotata* Schwarzer, 1925, adult, live pictures. **6** A fresh emerged adult from the log in fig. 2, from Hainan, Diaoluoshan, showing the white pubescence, taken in 2010.IV.23, by Zi-Wei Yin **7** An active adult from Hainan, Jianfengling, showing the yellow pubescence, taken in 2011.V.23, by Wen-Xuan Bi **8** An active adult from Taiwan, Dahanshan, showing the yellow pubescence, taken in 2010.VIII.29, by Yu-Long Lin.

Glenea (*s. str.*) *lacteomaculata*; Gressitt 1951: 575.

Glenea (*Glenea*) *lacteomaculata*; Breuning 1956b: 743; Breuning 1966: 689; Yu and Nara 1988: 45, 92, pl. 20, fig. 18; Yu, Nara and Chu 2002: 68, 119, pl. 25, fig. 10.

Glenea (*G.*) *lacteomaculata*; Nakamura, Makihara, Saito, 1992: 105; Nakamura et al. 2014: 174.

Glenea lacteomaculata; Hua 2002: 210; Hua et al. 2009, 216, 358, pl. LXXXII, fig. 939.

Glenea (*Glenea*) *lacteomaculata lacteomaculata*; Löbl and Smetana 2010: 325; Danilevsky 2013: 201.

Glenea lacteomaculata; Lin and Yang 2011: 65, fig. 24; Behne and Gaedike 2013: 183.

Remarks. Lin and Yang (2011) were unable to define *G. lacteomaculata* Schwarzer, 1925. Subsequently, the first author examined a photograph of a syntype of *G. lacteomaculata*

(taken by Nobuo Ohbayashi, Japan). Comparing that photograph with another of *G. quadriguttata* Pic, 1926, it is possible to conclude that the latter must be elevated to species. Hua (2002) indexed Taiwan and Guangxi and this was followed by Löbl and Smetana (2010). However, the specimens from Guangxi should be *G. quadriguttata* Pic, 1926 (Lin and Yang 2011) and only Taiwan was the known locality of *G. lacteomaculata* Schwarzer, 1925.

Distribution. China: Taiwan.

Lectotype designation. According to the original description (Schwarzer 1925), there were multiple type specimens. The syntypes were deposited in SDEI and SMF. In order to fix the species concept and ensure universal and consistent interpretation of this species, we designate the female specimen in SDEI as the lectotype (Fig. 10a, b), the female in SMF (Fig. 11a, b) and another one with same collecting data to the lectotype (Behne and Gaedike 2013) as the paralectotypes of *G. lacteomaculata* Schwarzer, 1925. Though the female in SMF is in better condition than the female with antennae mostly lost in SDEI, we pick up the SDEI one as lectotype according to ICZN Recommendation 74D. The majority of Schwarzer's types collected by Hans Sauter is contained in SDEI (listed by Behne and Gaedike 2013; Stephan Blank and Junsuke Yamasako, personal communication in November, 2015). The lectotype has the following labels: "Sokutsu/ Formosa/ H. Sauter 1912" printed, "7.VI." printed, "Glenea lacteomaculata / Cotype! Schwarzer" handwritten, "Syntypus" printed on red label, "DEI Coleoptera # 200572" printed on white label. And a lectotype label will be added by the managers in SDEI after this paper.

***Glenea quadriguttata* Pic, 1926, revised status, lectotype designation**

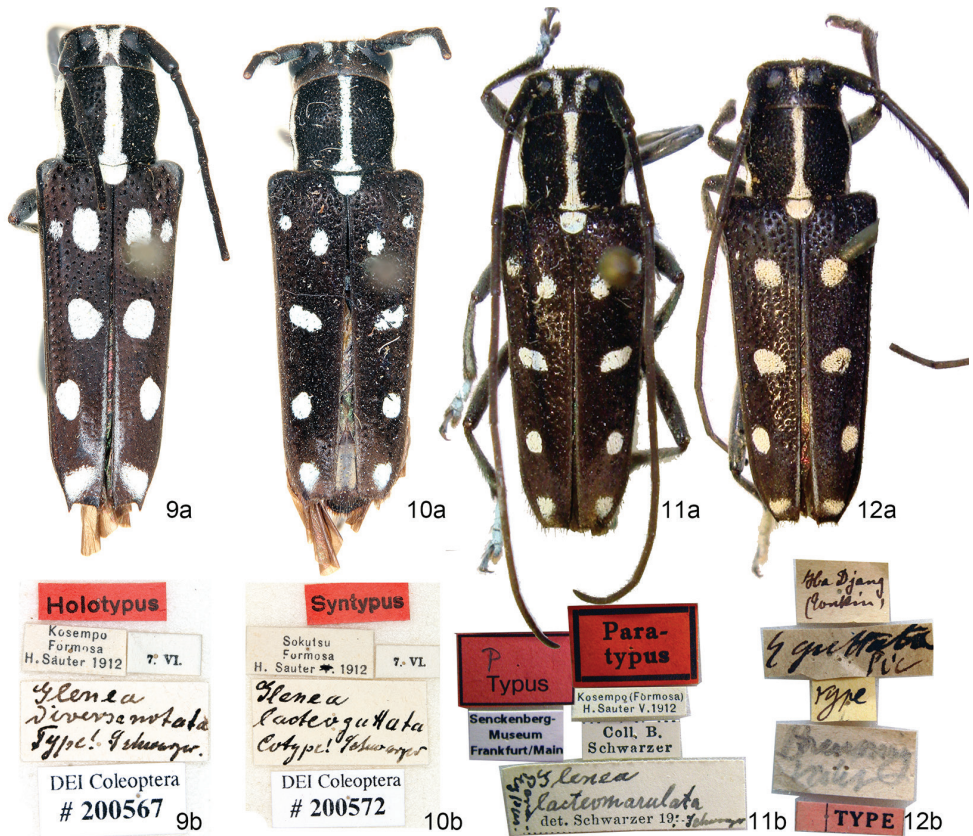
Glenea 4-guttata Pic, 1926: 22. Type locality: Vietnam, Tonkin, Djang. Type depository: MNHN.

Glenea (Glenea) lacteomaculata sbsp. *quadriguttata*; Breuning 1956b: 743, 744; Breuning 1966: 689.

Glenea lacteomaculata quadriguttata; Lin and Yang 2011: 65, figs 25–26.

Glenea (Glenea) lacteomaculata quadriguttata; Danilevsky 2013: 201.

Remarks. Breuning (1956) had previously treated *G. quadriguttata* as a subspecies of *G. lacteomaculata*. We have found the following morphological differences between them — *Glenea lacteomaculata*: vertex and occiput of the head with two separate, longitudinal vittae of white pubescence; punctures at the base of the elytra denser and more irregularly spaced than in *G. quadriguttata*; central-most, white elytral maculae more slender, transverse and oblique; elytral apex without acute or toothed angles; — *Glenea quadriguttata*: head with vittae fused, not separate; central-most, white elytral maculae almost rounded; elytral apex with small sutural and outer apical teeth. With these differences, *G. quadriguttata* is reinstated as an independent species.



Figures 9–12. *Glenea* spp., **a** habitus, dorsal view **b** labels **9** *Glenea diversenotata* Schwarzer, 1925, holotype, female, in SDEI (photographed by Nobuo Ohbayashi) **10–11** *Glenea lacteomaculata* Schwarzer, 1925 **10** Lectotype, female, in SDEI (photographed by Nobuo Ohbayashi) **11** paralectotype, female, in SMF (photographed by Mei-Ying Lin) **12** *Glenea quadriguttata* Pic, 1926, lectotype, female, in MNHN (photographed by Mei-Ying Lin). All pictures not to scale.

Distribution. China (Guangxi, Yunnan); Vietnam (Tonkin).

Lectotype designation. The original description does not allow to know the number of specimens used by Pic (1926). In order to fix the species concept and ensure universal and consistent interpretation of this species, we designate the female specimen with Pic’s handwriting labels as the lectotype (Fig. 12a, b), and the first author did not find another syntype to be paralectotype when she worked in MNHN in 2007–2008. The lectotype has the following labels: “Ha Djang/ (Tonkin)” handwritten, “*G. quadriguttata* Pic” handwritten, “type” handwritten on yellow label, “Breuning valiv” handwritten, “TYPE” printed on pink red label. And a lectotype label will be added by the managers in MNHN after this paper.

Key to *Glenea coomani* group

(modified from Lin and Yang 2011)

- 1 Elytral apex having only a short tooth at the outer angle (subequal to that at the sutural angle, fig. 34 in Lin and Yang 2011) **2**
- Elytral apex having a long and sharp spine at the outer angle (much longer than that at the sutural angle, fig. 35 in Lin and Yang 2011) **5**
- 2 Elytron having only one big oval macula at basal quarter; the second macula is the smallest (Figs 1–4 in Lin and Yang 2011) ***G. coomani***
- Elytron having two small spots at basal quarter, the first spot is the smallest.... **3**
- 3 Vertex with one pubescent spot between upper eye lobes; the middle spot on elytron almost rounded (Fig. 12) ***G. quadriguttata***
- Vertex with two pubescent vittae between upper eye lobes; the middle spot on elytron transverse and oblique..... **4**
- 4 Suture without pubescence stripe; the middle vitta shorter and still far from suture; the apical pubescent vitta small and with distance from suture (Figs 10–11)..... ***G. lacteomaculata***
- Suture with pubescence stripe; the middle vitta longer and almost touching sutural stripe; the apical pubescent vitta larger and fused with sutural stripe (Figs 30–33 in Lin and Yang 2011) ***G. tonkinea***
- 5 Elytron having 5 white or yellow maculae (figs 12–15 in Lin and Yang 2011; Figs 6–9)..... ***G. diversenotata***
- Elytron having 6 white or yellowbrown maculae..... **6**
- 6 Legs testaceous; elytral apical spot smaller, not touching suture; vertex with two yellowish-brown spots between upper eye lobes (fig. 27 in Lin and Yang 2011)..... ***G. laodice***
- Legs black; elytral apical spot larger and touching suture; vertex with one yellowish-brown spot between upper eye lobes (figs 28–29 in Lin and Yang 2011)..... ***G. subalcyone***

Acknowledgements

We are grateful to Gérard Tavakilian and Olivier Montreuil (MNHN), Stephan Blank (SDEI), and Andrea Hastenpflug-Vesmanis (SMF) for providing access to the collections and the allowance to use the pictures. We wish to express our sincere thanks to Nobuo Ohbayashi and Junsuke Yamasako (Japan), Yu-Long Lin (Taiwan, China), Zi-Wei Yin and Wen-Xuan Bi (Shanghai, China) for sharing pictures and information. We thank two reviewers and the editor of Zookeys for critical comments. This research was supported by NSFC programs 31472029 and J1210002, and partly by a grant (No. O529YX5105) from the Key Laboratory of the Zoological Systematics and Evolution of the Chinese Academy of Sciences.

References

- Aurivillius C (1925) Neue oder wenig bekannte Coleoptera Longicornia. 21. Arkiv för Zoologi, Uppsala 18A(9): 503–524, 23 figs.
- Behne L, Gaedike H (2013) Katalog der in den Sammlungen des Senckenberg Deutschen Entomologischen Instituts aufbewahrten Typen – Coleoptera: Cerambycidae. Contributions to Entomology: Beiträge zur Entomologie 63(1): 169–198.
- Breuning S (1956a) Lamiaires nouveaux de la collection Lepesme (2e note). Longicornia III: 665–702, 12 figs.
- Breuning S (1956b) Revision der Gattung *Glenea* Newm. (1. Fortsetzung). Entomologischen Arbeiten aus dem Museum G. Frey, Tutzing bei München 7(2): 671–893.
- Breuning S (1966) Catalogue des Lamiaires du Monde (Col. Céramb.). Verlag des Museums G. Frey, Tutzing bei München (9): 659–765.
- Chou WI (2004) The Atlas of Taiwanese Cerambycidae. Owl Publishing House, Taipei, 408 pp.
- Chou WI (2008) The Atlas of Taiwanese Cerambycidae (second edition). Owl Publishing House, Taipei, 408 pp.
- Danilevsky ML (2013) Additions and corrections to the new Catalogue of Palaearctic Cerambycidae (Coleoptera) edited by I. Löbl and A. Smetana, 2010. Part. VII. Humanity space - International Almanac 2(1): 170–210.
- Gressitt JL (1951) Longicorn beetles of China. In: Lepesme P (Ed.) Longicornia, études et notes sur les longicornes, Volume 2. Paul Lechevalier, Paris, 667 pp., 22 pls.
- Hua LZ (2002) List of Chinese Insects. Zhongshan (Sun Yat-sen) University Press, Guangzhou, 2: 1–612.
- Hua LZ, Nara H, Yu CK (1993) Longicorn Beetles of Hainan & Guangdong. Muh-Sheng Museum of Entomology, Taiwan, 320 pp, 24 pls.
- Hua LZ, Nara H, Samuelson GA, Lingafelter SW (2009) Iconography of Chinese Longicorn Beetles (1406 species) in Color. Sun Yat-sen University Press, Guangzhou, 474 pp, 125 pls.
- Lin MY (2015a) A Photographic Guide to Longhorn Beetles of China. Chongqing University Publishing house, Chongqing, 227 pp.
- Lin MY (2015b) Album of Type Specimens of Longhorn Beetles Deposited in National Zoological Museum of China. Henan Science and Technology Press, Zhengzhou, 374 pp.
- Lin MY, Yang XK (2011) *Glenea coomani* Pic, 1926 and its related species of South China with description of a new species. ZooKeys 153: 57–71. doi: 10.3897/zookeys.153.2106
- Löbl I, Smetana A (2010) Catalogue of Palaearctic Coleoptera. Vol. 6. Apollo Books, Stenstrup, 924 pp.
- Nakamura S, Makihara H, Kurihara T, Yamasako J (2014) Check-list of Longicorn-beetles of Taiwan. Miscellaneous Reports of the Hiwa Museum for Natural History, Shobara (55): 1–277.
- Nakamura S, Makihara H, Saito A (1992) Check-list of Longicorn-Beetles of Taiwan. Miscellaneous Reports of the Hiwa Museum for Natural History, Shobara (33): 1–111.
- Pic M (1926) Nouveautés diverses. Mélanges Exotico-Entomologiques 47: 1–32.
- Schwarzer B (1925) Sauters Formosa-Ausbeute (Cerambycidae. Col.). (Subfamilie Lamiinae.). Entomologische Blätter 21(4): 145–154.

- Tavakilian G, Chevillotte H (2015) Titan: base de données internationales sur les Cerambycidae ou Longicornes. Version 3.0. <http://lis-02.snv.jussieu.fr/titan/> [accessed on November 3, 2015]
- Yu CK, Nara H (1988) The Longicorn beetles of Taiwan. Muh-Sheng Museum of Entomology, Taiwan, 112 pp.
- Yu CK, Nara H, Chu YI (2002) The Longicorn beetles of Taiwan (new edition). Muh-Sheng Museum of Entomology, Taiwan, 151 pp.